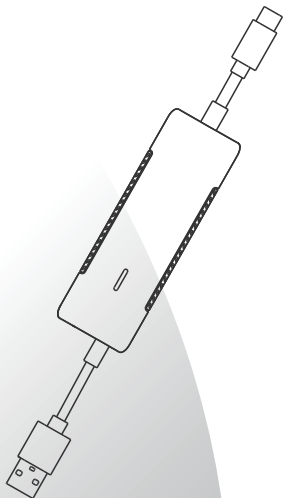


# Ottocast MirrorTouch Car Adapter **User Manual**

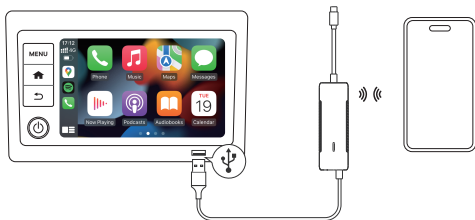


## Warning

- Please read all instructions and warnings before using this product.
  - For your safety and the safety of other road users, and to comply with the traffic laws of your country, please do not watch videos while driving.
  - Do not store this product in a high temperature, strong light, or strong magnetic field environment, and avoid placing it in other harsh environments.
  - Avoid strong physical impact, including hitting, stepping on, or squeezing.
  - Avoid powering the product with a power source that exceeds the rated voltage of the product, as this may cause the product to malfunction.
  - Do not disassemble this product, as it will void the warranty.
  - If the consumer violates the product explanation and uses it improperly, they will bear all the consequences, and the company will not bear any legal responsibility.
- \* This product is only compatible for vehicles with factory wired CarPlay.**
- \* The information in this manual is subject to change without prior notice.**

# Overview

## ■ Converts Factory Wired CarPlay to Wireless CarPlay.



Head Unit

Adapter

iPhone

## ■ Screen mirroring for iOS/Android.



Head Unit

Adapter

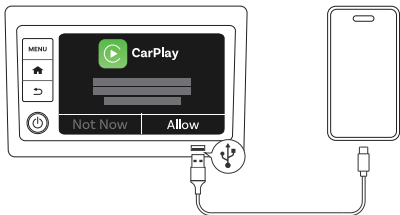
iPhone/Android

**\* It supports reverse control of the mobile phone screen on the car screen.**

## Check the adaptability

### ■ How to check for factory wired CarPlay of vehicles.

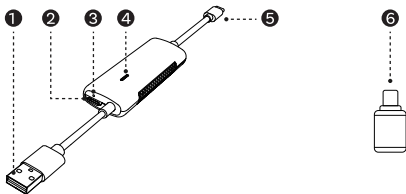
Plug in the iPhone into the car's USB port using the original factory cable. If the following notification pops up on the car, it means your car has built-in CarPlay.



\* iPhones must run iOS 10 or a later version.

\* If you are still unable to determine whether your car supports wired CarPlay, please Contact your car dealer for help.

## Hardware Interface





\* Where this diagram is inconsistent with the product, the product shall prevail.

### ① USB-A Male

Used for power supply and data transmission.

### ② Type-C Female

It is used for power input and supports the input from a charger that complies with the PD protocol.

### ③ Hidden button

Long press for 10 seconds to clear all data and restore to factory settings.

### ④ LED

- Blue bright light: Power On
- Blue bright light: Auto communication succeeded
- ✦ Green flicker: Mobile phone connecting...
- Green bright light: Mobile phone connected successfully
- ✦ Red-green alternating flashing: Firmware Updating...
- White bright light: Firmware Update Complete
- ✦ Red flicker: Unexpected Firmware Update
- White bright light: Reset Complete

● Always on

✦ flashes

✦ Alternating colors

### ⑤ Type-C Male

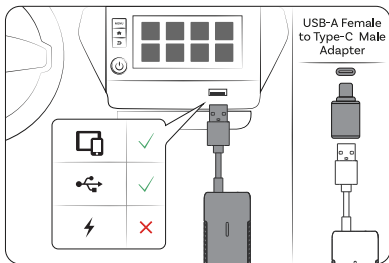
It is used for power supply and data transmission, and supports the output of the PD protocol with a maximum of 27 watts.

### ⑥ USB-A Female to Type-C Male Adapter

# Start

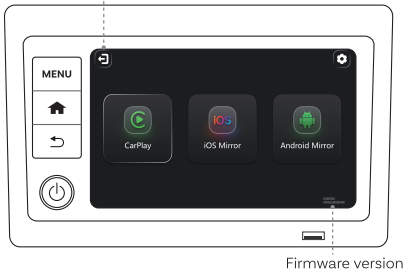
## ■ Install

\* Where this diagram is inconsistent with the product, the product shall prevail.



## ■ User Interface

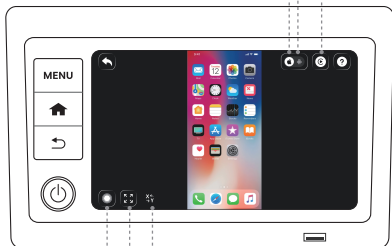
Back to factory menu



Currently in Android Mirror mode

Currently in iOS Mirror mode

Quickly switch to CarPlay



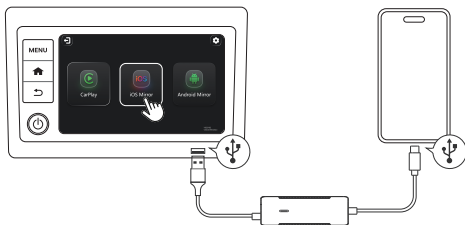
iOS Home button

Mirror touch coordinates

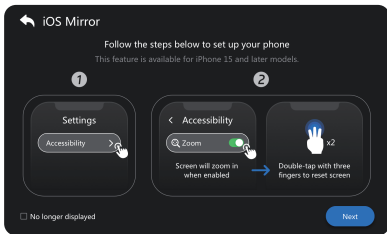
Make the video full screen

## ■ Screen mirroring for iOS

1. Connect the product to the car and the mobile phone, and click the iOS Mirror icon.

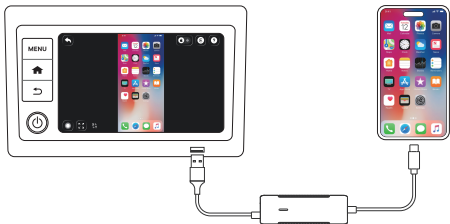


2. Follow the instructions to set up the phone properly.



\* **Please note:** The touch function can only be activated after the settings are made!

3. The connection is successful.

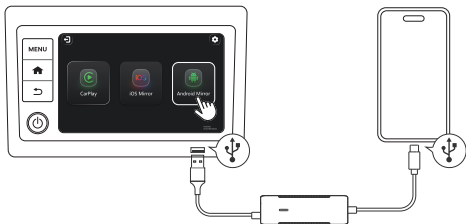


\* Supported models: iPhone 15 and above.

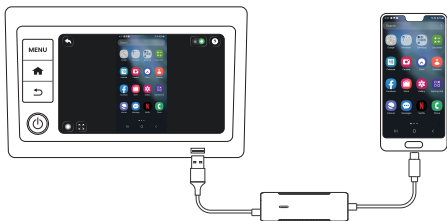
\* It supports reverse control of the mobile phone screen on the car screen.

## ■ Screen mirroring for Android

1. Connect the product to the car and the mobile phone, and click the Android Mirror icon.



2. The connection is successful.

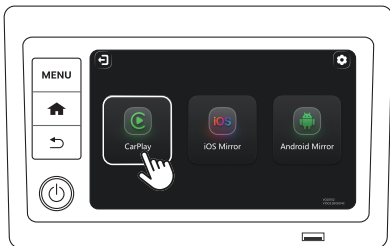


- \* It supports reverse control of the mobile phone screen on the car screen.
- \* Regarding the DESK mode: Some mobile phones come with the DESK mode pre-installed, and the DESK mode will be automatically activated when connected to screen mirroring. If you do not need the DESK mode, you can manually exit this mode. Please refer to the mobile phone instruction manual for the specific exit path.
- \* This function is only supported by Android phones with DP display output function. This QR code lists some of the phone models that support DP display output. If your phone model is not on the list, you can further consult your phone dealer.

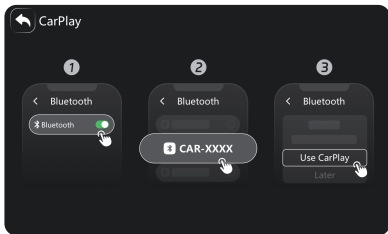


## ■ Wireless CarPlay

1. Tap the CarPlay icon.



2. Turn on your phone's Wi Fi and Bluetooth, then pair it with a Bluetooth device named [CAR-XXXX]. Agree to all requests.



3. Successfully connected to CarPlay/Android Auto (and there is no need to repeat the pairing steps the next time it starts).



## ■ Switch Devices

1. Remove the adapter from the car.
2. Turn off the WiFi and Bluetooth of the current phone.
3. Connect the adapter to the car and start connecting Bluetooth.

### \* Reconnect mechanism:

This adapter supports storing two phones, and by default, it prioritizes reconnecting to the last used phone. If the reconnection timeout (15-30 seconds) occurs, it will automatically connect to the other phone.

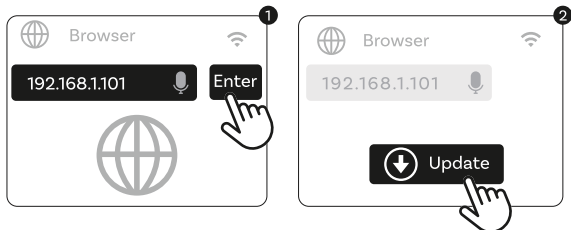
- \* You can set the CarPlay icon as the default function in the system settings, and you can directly enter this function every time you turn on the device.



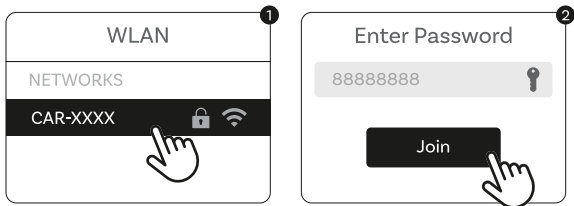
# Instructions for upgrading and reporting issues for iPhone users

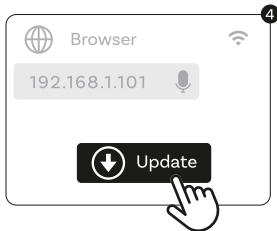
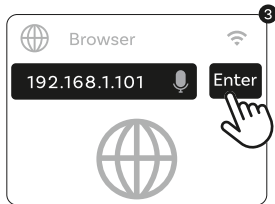
## 1. Firmware Upgrade

1.1 Upgrade in CarPlay connected state.



1.2 Upgrade when CarPlay is not connected.





- \* Please do not turn off the power during the update process.
- \* After the upgrade is completed (with the LED in color white), please unplug the adapter.
- \* After updating, please re-pair your phone.


## 2. Reporting issues

2.1 Fill in the table and submit.

1

Car brands	Volkswagen
Car models	Passat
Car years	2023

Upload log



2.2 Copy the case number.

2

Car brands	Volkswagen
------------	------------

Case No.:XXXXXXXXXX

Copy Paste



2.3 Send the case number to the seller.



3

To:

Subject: Report the issue

Case No.:XXXXXXXXXX

Copy Paste



## **FCC Warning**

This device complies with part 15 of the FCC Rules. Operation is subject to the following two conditions:

- (1) This device may not cause harmful interference;
- (2) this device must accept any interference received, including interference that may cause undesired operation.

## **IC Warning**

This device complies with Industry Canada's license-exempt RSSs. Operation is subject to the following two conditions:

- (1) This device may not cause interference; and
- (2) This device must accept any interference, including interference that may cause undesired operation of the device.

« Le présent appareil est conforme aux CNR d'Industrie Canada applicables aux appareils radio exempts de licence.

L'exploitation est autorisée aux deux conditions suivantes :

- (1) l'appareil ne doit pas produire de brouillage, et
- (2) l'utilisateur de l'appareil doit accepter tout brouillage radioélectrique subi, même si le brouillage est susceptible d'en compromettre le fonctionnement. »

The product should be kept at least 20CM away when used.

Le produit doit être conservé au moins 20CM une fois utilisé.

## **LP0002警語:**

「取得審驗證明之低功率射頻器材，非經核准，公司、商號或使用者均不得擅自變更頻率、加大功率或變更原設計之特性及功能。低功率射頻器材之使用不得影響飛航安全及干擾合法通信；經發現有干擾現象時，應立即停用，並改善至無干擾時方得繼續使用。前述合法通信，指依電信管理法規定作業之無線電通信。低功率射頻器材須忍受合法通信或工業、科學及醫療用電波輻射性電機設備之干擾。」

## **5G Wi-Fi的警語:**

應避免影響附近雷達系統之操作。

高增益指向性天線只得應用於固定式點對點系統。

## **PLMN ALL**

「減少電磁波影響，請妥適使用」

## **Copywrite Notice**

Google, Google Play, Android, Android Auto, are trademarks of Google Inc., registered in the U.S. and other countries.

Apple, iPhone, iPad, and CarPlay are trademarks of Apple Inc., registered in the U.S. and other countries.

We are not affiliated with Google Inc. or Apple Inc. All other product and service names mentioned are the trademarks of their respective companies.



Scan the QR code below to view the English version of the operation manual or user support video.



スマートフォンのカメラでQRコードを読み取って、日本語の操作ガイドまたは操作動画をご覧ください。



아래 QR코드를 스캔하여 한국어 매뉴얼 또는 사용자 지원 영상을 확인하세요.



Escanee el código QR a continuación para ver el manual en español o el video de soporte al usuario.



Digitalize o código QR abaixo para ver o manual em português ou o vídeo de apoio ao utilizador.



Scannez le code QR ci-dessous pour afficher le manuel en français ou la vidéo d'assistance utilisateur.



Scannen Sie den QR-Code unten, um die deutsche Bedienungsanleitung oder das Benutzer-Support-Video anzuzeigen.



Scansiona il codice QR qui sotto per visualizzare il manuale italiano o il video di supporto utente.



掃描以下的二維碼，以查看操作手冊的中文版或用戶支援影片。

